



Case Study: National Orthodox School

Mob. + 962 79094 73 58
Mail info@sg-acoustics.com
Mob. + 962 79651 75 06

Amman 11118
P.O. Box 182409
www.sg-acoustics.com



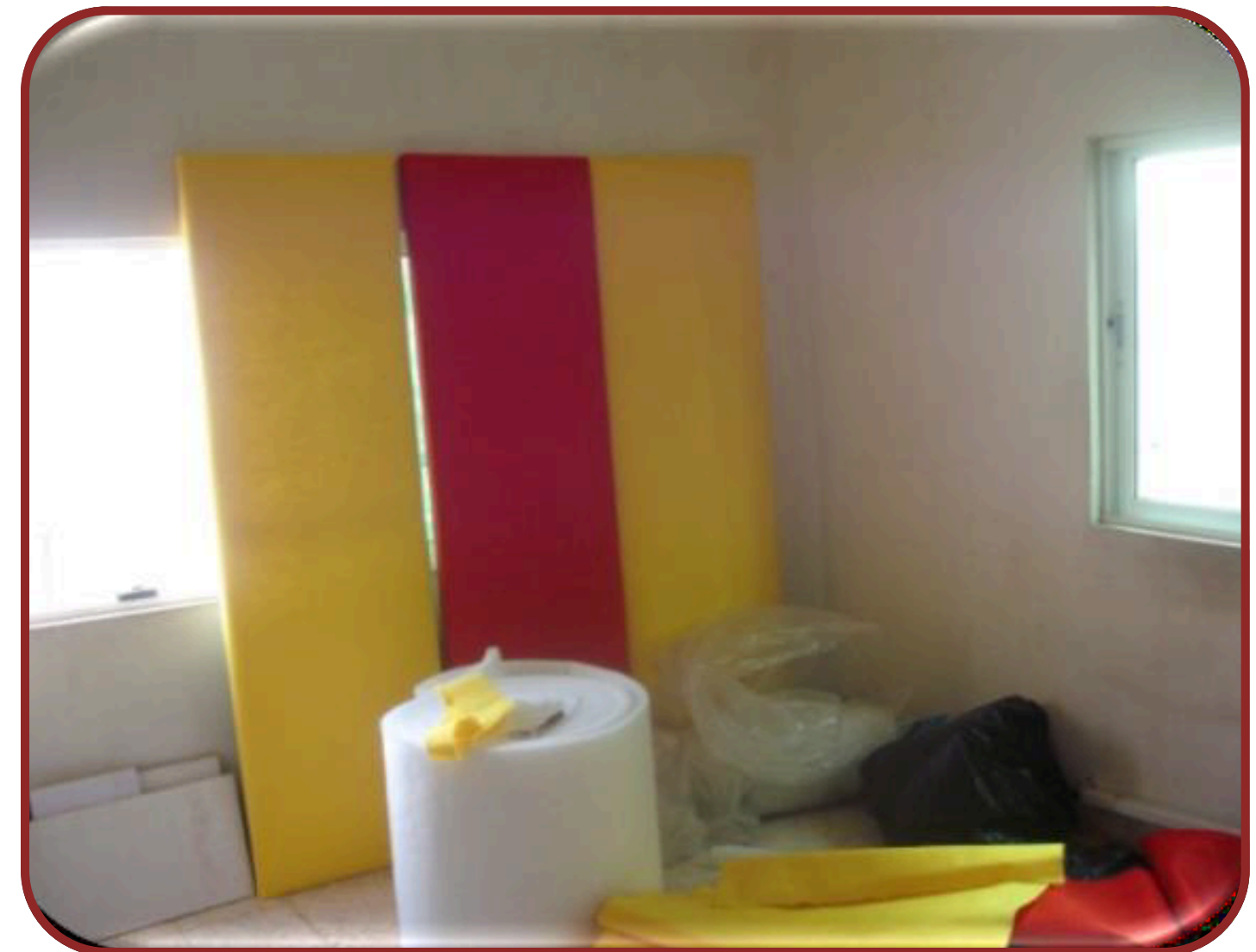
Challenges

- **Room Dimensions:** 8.95m length x 3.9m width x 2.5m height.
- **Building Materials:** All surfaces are plastered concrete, which has a very low absorption factor of approximately 3%, along with a wooden door and three glass windows.
- **Reverberation Time (RT60) before treatment:** 1.9 seconds, despite the room being fully carpeted.



Solutions

- The requirement was: to use hygienic acoustic panels that would absorb low, medium, and high frequencies with different panel thicknesses.
- Panels were required to be hygienic without any impact on child health



Results

- The achieved RT60 value after installation was 0.7 second which is warm and comfortable for singing and playing music.





Contact Us

- + 962 79094 73 58
- info@sg-acoustics.com

